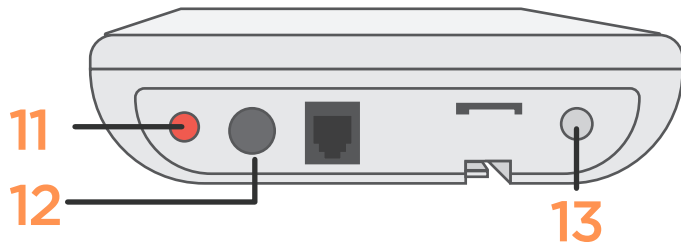
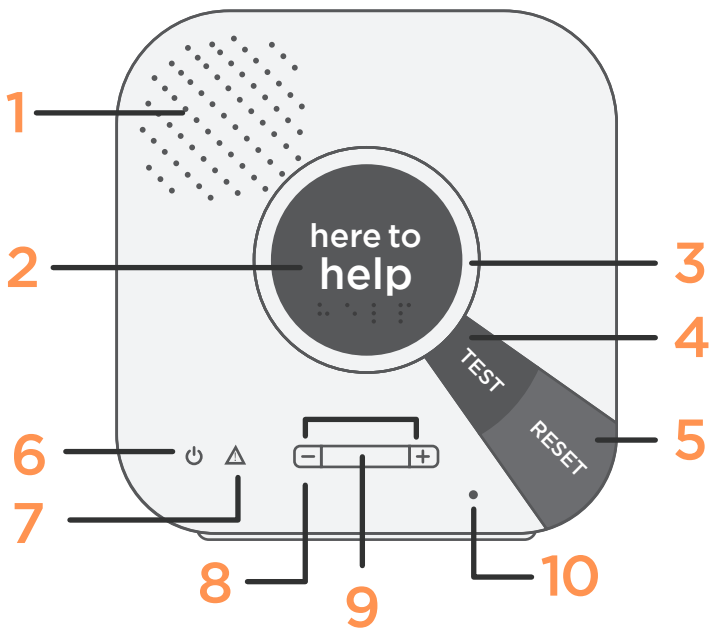


# Meet Your New PERS

## 4G In Home Cellular Emergency Response System

4G In Home Cellular was created to provide you comfort, reassurance and peace of mind by making it possible for help to be just a touch of a button away.

### Get to Know Your Unit



- 1 Speaker**  
Used to listen to the Care Center
- 2 Emergency Button**  
Press to send emergency alarms to the Care Center
- 3 Alarm Status Light**  
Solid Blue indicates normal operation  
Solid Red light indicates calling the Care Center  
Dim Red light indicates a maintenance signal is being sent  
Solid Purple light indicates programming mode
- 4 Test Button**  
Used to send test signal to the Care Center
- 5 Reset Button**  
Used to cancel alarm
- 6 Power Light**  
Solid light indicates unit is properly connected  
Flashing light indicates AC power is not available and running on its back-up battery
- 7 Trouble Light**  
Indicates the device is searching for cell signal
- 8 Volume Up/Down**  
Used to adjust audio
- 9 Cell Signal Indicator**  
Used to indicate signal strength
- 10 Microphone**  
Used to communicate with the Care Center
- 11 On/Off Button**  
Switch on to power the unit
- 12 Power Jack**  
Connect with the provided AC adapter to a power outlet
- 13 Programming Button**  
Used to range test and learn in emergency sensors

### Unit Facts & Features:

- ◆ Unit will perform silent self-tests to the Care Center
- ◆ The button can be worn around your wrist or neck
- ◆ Please test your unit monthly to ensure it is working properly
- ◆ Battery back-up in case of power outage
- ◆ Water-resistant button
- ◆ Fall detection available
- ◆ Powerful 3W speaker for clear communication
- ◆ Two-way hands free communication
- ◆ Uses cellular network connection
- ◆ For additional questions, call tech support at [1-800-860-4230](tel:1-800-860-4230)