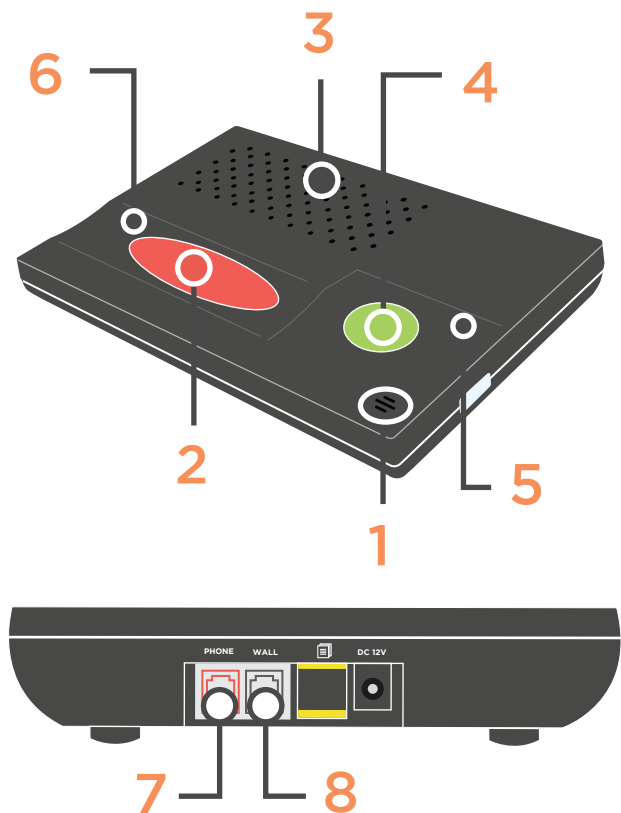


# Meet Your New PERS

## CL32 Emergency Response System

CL32 was created to provide you comfort, reassurance and peace of mind by making it possible for help to be just a touch of a button away. Simply connect your unit through your home telephone to begin living confidently knowing we are always here to help.

### Get to Know Your Unit



- 1 Microphone**  
Used to communicate with the Care Center
- 2 Emergency Button**  
Press to send emergency alarms to the Care Center
- 3 Speaker**  
Used to hear the Care Center
- 4 Reset Button**  
Used for troubleshooting purposes only
- 5 Power Light**  
Solid light indicates unit is properly connected  
Flashing light indicates AC power is not available and running on its back-up battery
- 6 Alarm Status Light**  
Solid light indicates unit is calling the Care Center  
Flashing light indicates unit is in programming mode
- 7 Phone Jack**  
Connects your unit to your telephone
- 8 Wall Jack**  
Connects the unit to your telephone wall jack

### Unit Facts & Features:

- ✦ Fall detection available
- ✦ The button can be worn around your wrist or neck
- ✦ Unit will perform silent self tests to the Care Center

- ✦ Water-resistant button
- ✦ Please test your unit monthly to ensure it is working properly

- ✦ For additional questions, call tech support at [1-800-860-4230](tel:1-800-860-4230)

#### Power Light:

- **Solid Green-** Unit is operating on AC power
- **Flashing Green-** Unit is running on back-up battery or low button battery